

A photograph of four children sledding down a snowy slope. In the foreground, a boy in a bright orange jacket and dark blue pants is smiling broadly. Behind him, another boy in a dark jacket is also smiling. In the background, two more children in blue hooded jackets are sledding down the slope. The scene is set in a snowy, mountainous area with a clear blue sky.

# IGNITE: SWITZERLAND

## Year 8

Your classroom could look like this

“As a parent, I would not hesitate to recommend the Ignite programme. Giving our kids the opportunity to build resilience, learn that they can do hard things, clean up after themselves, be responsible for themselves, be more organised and accountable, all within such a safe, controlled, nurturing environment, is a truly unique opportunity for this age group. And all of this personal growth comes in addition to the phenomenal outdoor programme.”



Ignite Parent, 2025

# Contents

What is Ignite: Switzerland?	4
The Three Ignite Experiences	6
Academic Approach	8
Wellbeing	10
Boarding Life	12
A Typical Day Looks Like	13
Frequently Asked Questions	14





**Ignite: Switzerland** is where exploration meets education—a truly unique and immersive learning opportunity for the curious, passionate and the brave, that will create lasting memories.

The programme is a **5-6 week residential learning experience** where our Year 8 students live and learn in a completely different environment. The nature of the programme is to break down classroom walls and look to the natural surroundings of the Engadin valley for inspiration.

**Set in the Swiss Alps** and hosted at **Hochalpinen Institut Ftan (HIF)**, students become part of a global community—learning alongside peers from across the Education in Motion (EiM) family of schools.

This is a moment in your child's journey where **independence, identity, and curiosity begin to deepen.**



# WHAT IS IGNITE: SWITZERLAND?

# THE THREE IGNITE EXPERIENCES

Students take part in one of six terms, each delivered within a specific season—Rock, Snow, or Water—each offering a different lens through which students experience the environment and their learning.

While the structure and outcomes remain consistent, each term brings its own unique rhythm, challenges, and opportunities.



## Rock Terms *(September – December)*

Set in the early alpine season, Rock Term offers a dynamic introduction to the outdoors and the surrounding environment.

### What this looks like:

- Hiking, climbing, and mountain exploration
- Outdoor skill-building and a wide range of physical and experiential activities



## Snow Terms *(January – March)*

During the winter months, the landscape transforms - creating a more focused and physically immersive experience.

### What this looks like:

- Skiing, snowboarding, and snow-based sports
- Winter expeditions and outdoor challenges



## Water Terms *(April – June)*

As the snow melts, the landscape opens—allowing for a broader range of experiences and deeper exploration.

### What this looks like:

- Water-based activities (e.g. rafting, canoeing)
- Cycling, hiking, and outdoor expeditions

# ACADEMIC APPROACH

At Ignite, students continue to learn, progress, and be challenged academically —while experiencing new ways of thinking and applying their knowledge. The programme is carefully designed to complement your child’s learning at their base school, ensuring continuity, depth, and meaningful progress.

## Core subjects include:

- English
- Mathematics
- Science
- Languages (French, Mandarin, or Spanish)

What makes Ignite different is not what students learn—but how they learn. Academic subjects are deeply connected to the surrounding environment:

- Mathematics is applied through navigation, mapping, and real-world problem solving
- Science is explored through fieldwork, ecosystems, and environmental investigation
- English develops through creative projects, communication, and presentation
- Languages are practiced in meaningful, real-life contexts

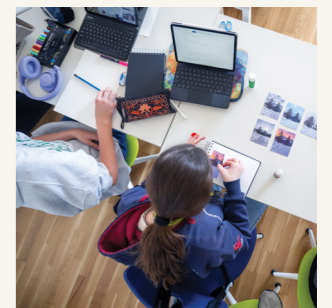
This approach helps students not only understand concepts—but apply them with confidence.

## Learning also becomes *personal*.

Through electives and the Passion Project, students are encouraged to explore a personal interest and showcase a consolidation of their learning.

## Electives:

- Treasures of Engadin
- Natural World
- Geology
- Nature Quest
- Woodwork





# WELLBEING

At Ignite, Wellbeing is thoughtfully woven into every aspect of the experience. From the structure of the day to the relationships students build, every element is designed to ensure students feel supported, balanced, and able to thrive while they grow.

They are guided to better understand themselves—how they think, feel, and respond to challenge.

- Awareness of stress, emotions, and mindset
- Strategies to manage pressure and uncertainty
- Confidence in navigating unfamiliar situations
- A sense of personal responsibility and independence



# BOARDING LIFE

HIF's homely boarding house is surrounded by breathtaking alpine views and a calm, uplifting sense of space.

The double-occupancy bedrooms are modern and colourful, featuring an en-suite for added personal comfort. Campers also have free access to the fitness and sports facilities.

HIF's experienced, first-aid-trained boarding staff are available 24/7, with safety, care and wellbeing as their primary concern.

Evenings at HIF are full of laughter—games in the auditorium, movie nights or watching the sunset fade over the peaks.



# A TYPICAL DAY LOOKS LIKE



# FREQUENTLY ASKED QUESTIONS



## Where is the programme held?

The Ignite: Switzerland programme is hosted at Hochalpinen Institut Ftan (HIF), part of the Education in Motion (EiM) family of schools. HIF is rooted in over 200 years of educational tradition and blends regional heritage with a global future. It is a co-educational day and boarding school for 12 – 18 year olds that offers both the Swiss Matura and A Levels to students from the region and internationally. Students from the Ignite programme will have opportunities to connect with the HIF community through different school activities.

## How does this fit with my child's school learning?

The programme is designed and delivered in alignment with international curricula and is shared with base schools to ensure continuity. Students remain engaged in meaningful academic learning, while also developing broader skills such as critical thinking, communication, and independence, complementing your child's academic journey, not interrupting it.

## How do students choose between Rock, Snow, and Water terms?

Each term offers a different environmental context and experience, but all deliver the same academic structure, level of support, and overall learning outcomes. When choosing a term, families may wish to consider your child's interest, and what environment will most excite and motivate them.

## Will my child be able to stay in touch with us?

Yes. Students have regular opportunities to communicate with home, while also being encouraged to be present and engaged in their experience.

A balanced approach to device use supports both connection with family and meaningful engagement in daily life. We also have a dedicated Class Dojo classroom with photographs and videos of the week's activities that will be updated regularly for parents to see so parents can feel part of the experience too.

## How do we apply for the Ignite: Switzerland Programme?

Parents and students who will be in Year 8 in the 2026/2027 Academic Year will receive a secure application form to sign up for the Ignite programme.

Please email [ignite@hif.ch](mailto:ignite@hif.ch) if you have not received this form.

# Where Exploration Meets Education



[ignite@hif.ch](mailto:ignite@hif.ch)