



**DULWICH COLLEGE**

| BEIJING |

北京德威英国国际学校

ADMISSIONS  
GUIDE

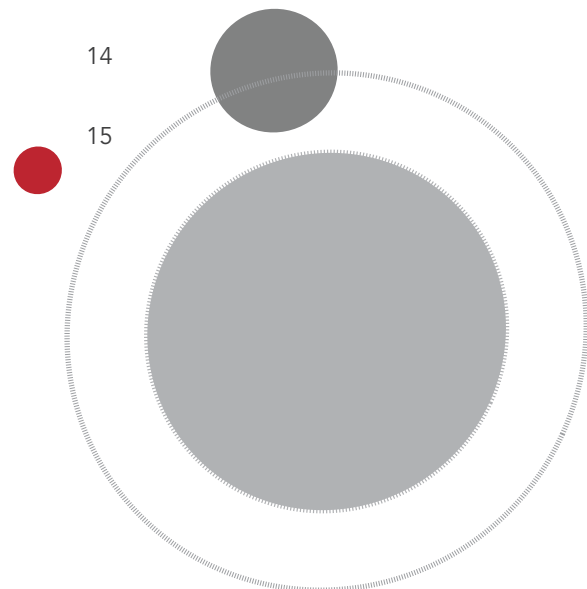
LIVE **WORLDWISE.**<sup>TM</sup>



# CONTENTS



ABOUT DCB	2
WHY DCB?	3
ELIGIBILITY	5
ADMISSIONS CRITERIA	6
GUARDIANSHIP	7
AGE PLACEMENT	8
APPLICATION PROCESS	9
EAL/AEN SUPPORT	12
SCHOOL UNIFORM	13
SCHOOL LUNCH	14
ADMISSIONS EVENTS	14
CONTACT US	14
SCHOOL TOUR	15



# ABOUT DCB



Founded in 2005 as the second school in the Dulwich College International family, Dulwich College Beijing (DCB) is now one of China's leading international schools, widely recognised and respected within the global education community.

The College educates over 1,550 students from Nursery to Year 13, representing more than 30 nationalities. Our diverse and inclusive community nurtures curious, thoughtful and socially responsible learners, empowered to achieve their very best.

DCB comprises three Schools: Dulwich College Kindergarten School (DUCKS) for children ages 2-7, starting from our toddler provision for two-year-olds embedded within Nursery, Junior School for ages 7-11, and Senior School for ages 11-18. Academically selective, the College follows an enhanced English National Curriculum tailored to the needs of an international student body. Students complete IGCSEs in Years 10 and 11 before progressing to either the IB Diploma Programme or the International Advanced Diploma in Years 12 and 13.

The International Advanced Diploma (IAD) is a personalised curriculum combining globally respected A levels with accredited real-world skills that build future-proof capabilities.

English is the primary language of teaching and learning, with a dual-language (English and Mandarin) approach for children aged 2-7. English proficiency is assessed prior to entry, and Mandarin curriculum is tailored to support learners of all abilities.

At DCB, we are committed to developing the whole child through a holistic approach to education. Academic excellence is complemented by outstanding sport, progressive and creative pathways in performing and visual arts, community services, rich co-curricular activities and extensive opportunities beyond the classroom. These experiences support our mission to nurture confident, compassionate global citizens who *Live Worldwide*.

Dulwich College Beijing is a vibrant, kind, and supportive community where students are known and inspired—well prepared for success in school and in life beyond it.

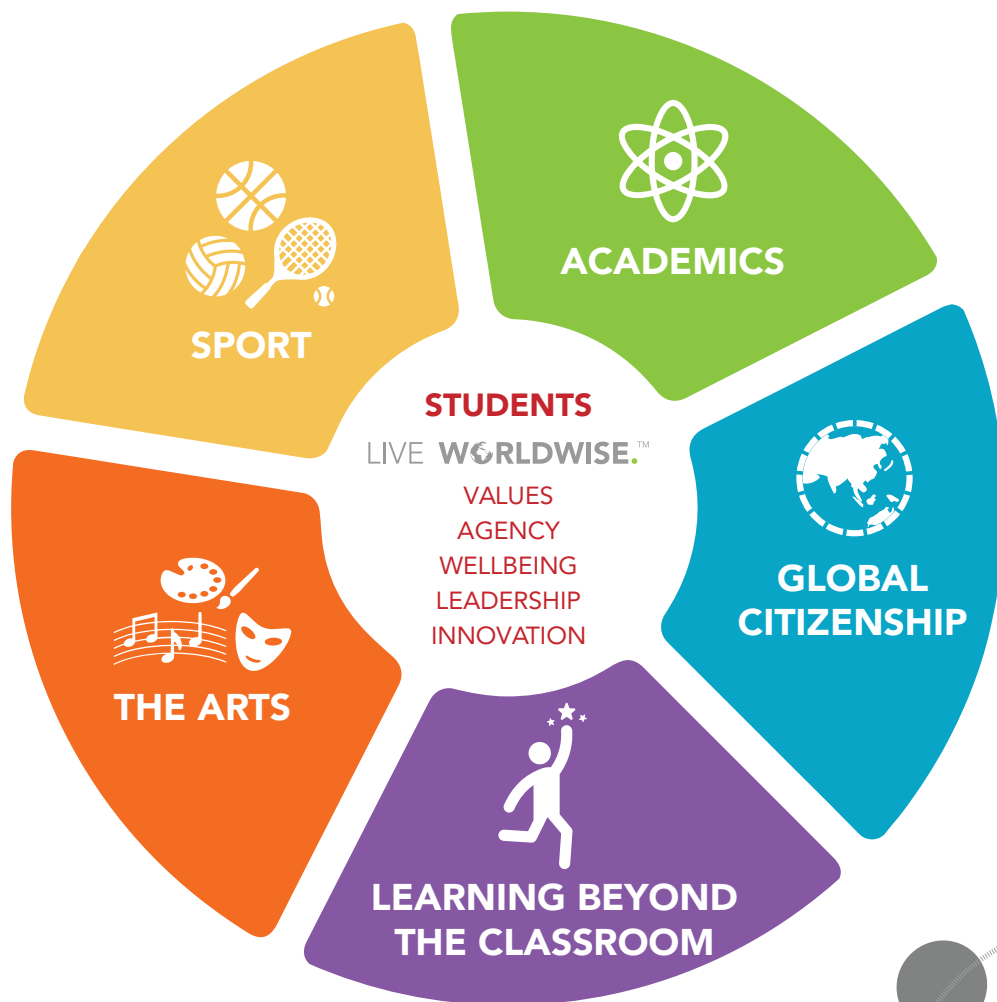


# WHY DCB?

## A HOLISTIC EDUCATION WHERE STUDENTS COME FIRST

At DCB, students are at the heart of everything we do. We believe in educating the whole child and taking a truly holistic approach—one that values not only academic achievement, but also character, wellbeing and personal growth.

Guided by our five educational pillars—academics, sport, the arts, learning beyond the classroom and global citizenship—we nurture essential skills and attributes such as leadership, agency, collaboration, creativity and critical thinking. Through this balanced and purposeful approach, students are empowered to grow into confident, compassionate global citizens who *Live Worldwide*.



## ACADEMIC EXCELLENCE WITH PERSONALISED PATHWAYS

DCB is widely recognised for its academic excellence. Grounded in the English National Curriculum and progressing through IGCSEs to either the IB Diploma Programme or the A Levels qualifications as part of our International Advanced Diploma, our academic pathways are well structured, coherent and internationally respected.

From joyful, engaging learning in the early years to personalised pathways in Senior School, students are supported to discover their strengths, pursue their interests and develop a genuine love of learning—preparing them for success at university and beyond.

University Matriculations (past 5 years) .....



and other reputable universities!

## A CONSISTENT AND PROGRESSIVE JOURNEY

A defining strength of DCB is the clarity and continuity of the student journey from Toddler to Year 13. Academic learning is complemented by a progressive approach to student leadership development, the arts, global citizenship, health and wellbeing, and learning beyond the classroom.

Rich co-curricular opportunities, service learning, trips and signature programmes broaden horizons and deepen real-world understanding. As part of the global Education in Motion (EiM) family of schools, students benefit from vast opportunities, shared expertise and experiences that extend well beyond the campus.

## A KIND, INCLUSIVE AND CONNECTED COMMUNITY

DCB is a warm, inclusive community where every member is respected and valued. Strong partnerships between parents and school are central to our approach, and families play an active role in school life. Through Friends of Dulwich, parents connect with one another, support new families and contribute meaningfully to the life of the school. This shared spirit of kindness, collaboration and belonging creates an environment in which students feel safe to take risks, embrace challenges and thrive.



# ELIGIBILITY

As an international school, we strictly adhere to the eligibility requirements set by the Beijing Municipal Education Commission (BMEC). Students whose identity falls into any of the following categories are eligible to apply. If not, please consult with DCB admissions for confirmation of eligibility.

- Foreign passport holder with a valid Chinese visa or Travel Document (旅行证)
- Hong Kong SAR, Macau SAR and Taiwan permanent resident with a valid Travel Permit (回乡证 / 台胞证)
- Chinese passport holder with foreign permanent residence permit and proof of having lived abroad for more than one year



# ADMISSIONS CRITERIA

---

To succeed at Dulwich College Beijing students must be willing to work hard and be committed to our programme. Teachers provide the support necessary for students to become confident and independent learners. Additionally, we expect parents to support and be involved in their children's education.

Applicants are admitted based on the:

- Ability to succeed socially and academically in the learning environment of Dulwich College Beijing
- Ability to demonstrate a good work ethic
- A history of school-appropriate behaviour
- A desire to attend Dulwich College Beijing
- Sense of community

The decision to offer a place to a prospective student is taken by the Head of School based on academic evaluations and assessments, English proficiency, past school records, student interviews, teacher recommendations, the applicant's date of birth, and any diagnostic testing that will help the College understand any special learning needs the applicant may have.

Please note that DCB does not authorise any third parties for admissions. For all information related to our school and admissions, please refer only the official channels, such as the DCB website and official WeChat, or consult DCB Admissions.

## **ENTRY INTO TODDLER, NURSERY, AND RECEPTION**

- Students entering Toddler (ages 2-3) do not need to be toilet-trained. Students entering Nursery and Reception, however, need to be. We understand that children develop at different rates, and our team is experienced in supporting younger learners through this natural transition.

## **ENTRY INTO YEAR 11 AND YEAR 13**

- Applications for enrolment in Year 11 are considered on a case-by-case basis and are typically not considered for Terms 2 and 3, as current students will be on study leave for mock exams and final exams for a significant portion of this period.
- The College will very rarely consider entry into Year 13. To be considered, students must be applying from a nearly identical IB or A-level programme and will be evaluated on a case-by-case basis.

# GUARDIANSHIP

To be considered for enrolment, a student must be living at the same residence in Beijing with one or both parents or a legal guardian. The College reserves the right to refuse a candidate's application if we believe that the applicant is or will not be living with parents or a legal guardian.



Wednesday 14<sup>th</sup> August 2021

Daily	Timetable
8:00-8:15	Registration
8:45-9:35	1 Guided Reading
9:40-10:30	2 Music
10:30-11:00	Break
11:00-11:50	3 Chinese
11:55-12:30	4 English
1:40-2:30	5 Maths
2:35-3:25	6 PE

# AGE PLACEMENT



Age as of 1 Sept	Dulwich Year Level	Grade Equivalent	UK Key Stage	Curriculum		
2	Early Years (DUCKS)	Toddler	Early Years Foundation	Follows standards set in the English Early Years Foundation Stage		
3		Nursery				
4		Reception				
5		Year 1	Key Stage 1			
6	Year 2	Grade 1				
7	Junior School	Year 3	Key Stage 2	Dulwich College Curriculum based on the English National Curriculum		
8		Year 4			Grade 2	
9		Year 5			Grade 3	
10		Year 6			Grade 4	
11	Senior School	Year 7	Key Stage 3		IGCSE	
12		Year 8				Grade 5
13		Year 9				Grade 6
14		Year 10	Grade 7			Key Stage 4
15		Year 11	Grade 8			
16		Year 12	Grade 9			
17		Year 13	Grade 10	Key Stage 5	IBDP A-level Qualifications	

Year level placement is determined by an applicant's age as of 1st September in the academic year of entry. Applicants come from many different countries with varying school calendars and enrolment age practices. Our 1st September cut-off date and year-level placement policy reflect what we believe is the most appropriate alignment for academic and social readiness. An exception to this policy would require the approval of the Head of College and would only be made when all the evidence suggests it is in the child's best interest to be enrolled in a year other than what their age suggests.

## CLASS SIZES

The maximum number of students in each class is as follows:

- Nursery, Toddler, Reception – 20 children
- Year 1 – 21 children
- Year 2 – 22 children
- Year 3 to 11 – 22-24 students
- IB Diploma or A-level Qualifications (Year 12 and 13) – 14 students

The College reserves the right to increase the number per class under special circumstances.

# APPLICATION PROCESS

---

A very warm welcome from the Admissions Team of Dulwich College Beijing! We understand that choosing a school for your child is a decision not made lightly, and our admissions team is here to support and guide you through the application process.

Students are admitted on a rolling basis; therefore, applications are accepted for all three terms of each school year. Places are offered through a holistic review process to enthusiastic and talented applicants who seek the opportunity to reach their full potential and have an impact on our community.

Take a moment to browse our website and prospectus, read about our engaging academic offerings, and learn about the exciting extracurricular programmes for our students.

If you are ready to take the next steps toward joining the DCB community, please submit your online application by taking the following steps. Should you have any questions during the application process, please feel free to contact our admissions team at any time.

We look forward to getting to know each applicant and their family through the admissions process!

## **ON ROLLING ADMISSION AND WAITLIST**

Our school operates a rolling admissions process, where space availability is fluid and influenced by the re-enrolment decisions of our current cohort. For year groups at full capacity, vacancies may arise at any time due to changes in family circumstances that result in student withdrawals.

As we continuously assess applicants throughout the year, available places are allocated on a first-come, first-served basis to those who have successfully completed the admissions process and have been accepted by the Head of School. If no place is available in the year group for which an applicant has applied at the time they are accepted by the Head of School and passes our eligibility review, they will be placed on our waiting list. Once a suitable vacancy becomes available, applicants on the waiting list are given priority for placement.

To maximise your child's chances of securing a place, we strongly encourage families to apply and complete the admissions assessment as early as possible.

## 1 REGISTER YOUR INTEREST AND CONFIRM YOUR CHILD'S ELIGIBILITY

As an international school in Beijing, we are only able to enrol students who meet specific eligibility requirements (see **Eligibility**).

If you are unsure whether your child meets these requirements, please confirm eligibility with the Admissions team before submitting an application.

**Email:** admissions.beijing@dulwich.org

**Tel:** +86 10 6454 9002

If eligibility has already been confirmed, you may proceed directly to the application.

## 2 SUBMIT AN ONLINE APPLICATION

Create an account in our application portal and complete the online application form. The process typically takes 10–15 minutes if all required documents are prepared in advance.

If you have any questions about the application, please contact the Admissions team at admissions.beijing@dulwich.org or +86 10 6454 9002.

Once your completed application has been received, a dedicated Admissions Officer will guide you through the rest of the process.

Families applying for more than one child should submit a separate application for each child.

## 3 SUBMIT REQUIRED DOCUMENTS

As part of the application process, families should provide several supporting documents, including:

- SAF - Supplementary Application Form

(外籍人员子女学校补充申请表) Required for the official eligibility review. We strongly recommend completing this form as early as possible to avoid delays in the admissions outcome.

- Teacher reference

Required for Junior School and Senior School applicants. Please forward the form from the application portal to your child's teacher and ask them to email it to admissions.beijing@dulwich.org once completed.

If your family is relocating from overseas due to employment and you are currently unable to provide the visas or other documentation required by this form, please inform your Admissions Officer. Kindly ensure that all outstanding documents are submitted as soon as they become available.

Parents are also encouraged to share any relevant information about **special educational needs** at an early stage so that appropriate support can be considered.

## 4 PAY THE APPLICATION FEE

A non-refundable application fee of RMB 2,900 is required for all applicants and applies only to the academic year of application.

Payment instructions will be provided during the admissions process, and proof of payment should be uploaded to the application portal.

## 5 ADMISSIONS ASSESSMENT

Applicants will be invited to complete admissions assessment.

Applicants residing in Beijing will complete assessments on campus, while applicants elsewhere may complete assessments remotely via Microsoft Teams.

## 6 ADMISSIONS DECISION

Admissions are decided following a holistic review of each applicant's profile, including:

- application materials
- assessment results
- interview feedback
- eligibility status
- place availability

Parents will be notified of the outcome by email.

## 7 OFFER OR WAITING LIST

If a place is offered, written confirmation of acceptance is required before invoices are issued and the onboarding process begins.

If a place is not immediately available, the applicant may be placed on the **waiting list**, and the Admissions team will contact families if a place becomes available.

Once the required deposits and fees have been received, onboarding and enrolment will begin ahead of your child's start date.

School fee invoices for the forthcoming academic year are typically issued in **April**, once the new fee structure has been confirmed.

### NOTE:

*Please contact Admissions to update contact information on the application form, as outdated contact details may delay processing and result in missed communications.*

# EAL/AEN SUPPORT

---

## ENGLISH AS AN ADDITIONAL LANGUAGE (EAL)

Applicants identified as needing additional English support during the admissions process will be offered EAL support, if they are offered a place.

Our EAL specialists help students develop the skills necessary to complete their schoolwork in English by working and planning with the students' class and subject teachers. To ensure a balanced and diverse student body, DCB may:

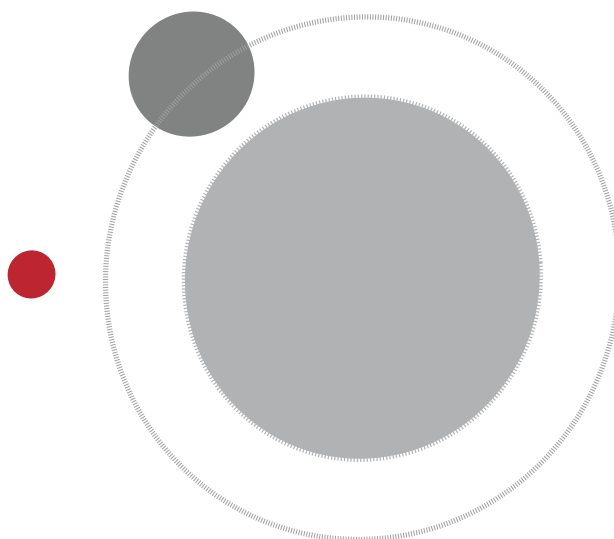
- Limit the enrolment of EAL students per class and year group.
- Only admit those students for whom it can make adequate provision of support.

## ADDITIONAL EDUCATIONAL NEED (AEN)

Candidates with AENs are accepted to DCB on a case-by-case basis. The child's needs are considered alongside current staffing levels, expertise, and resources within the school.

We offer support tailored to the individual student, ranging from individual education plans to classroom curriculum support. We may withdraw students individually, in groups, or support them in class, depending on the most appropriate method for each student. The AEN Department works with class teachers in adapting aspects of the curriculum for individual student's needs. We can also provide detailed information and teaching strategies for specific conditions.

Additional adult support or specialist resources may be necessary for the school to make adequate educational provisions for a student. If so, the additional cost of this will be borne by the parents. DCB will only admit students who can be adequately supported, which generally means supporting those with mild needs rather than moderate or severe ones.



# SCHOOL UNIFORM

All students except for Key Stage 5 (Year 12 and 13) students (who adhere to a business dress code) are required to wear school uniforms. The school uniform varies for warm and cold weather, and students should adhere to the seasonal requirements outlined in the Uniform Guide. Parents should budget for the purchase of the correct school uniforms.



# SCHOOL LUNCH

---

The school lunch programme provides students with the option to either bring their own lunch or pay for the school-provided lunch. We provide an exceptional selection of different balanced set menus served to all students attending a full day of school (Nursery to Year 13).

All full-time students will use a lunch card system that records and charges students for school meals. Parents are responsible for topping up their child(ren)'s lunch card(s) in time to cover the costs of lunches or snacks purchased.

# ADMISSIONS EVENTS

---

Attending our admissions events is another excellent way to experience DCB firsthand from multiple perspectives.

- Open Days, Playgroups and Experience Days - offer prospective families an authentic and immersive introduction to school life at Dulwich. Through taster lessons, interactive experiences, campus tours, and opportunities to meet teachers and school leaders, families gain first-hand insight into our academic standards, pastoral provision, teaching quality, and school culture.
- Parent Academies - provide a deeper understanding of our educational philosophy, curriculum framework, learning pathways, and assessment approaches, supporting parents in making well-informed decisions about their child's education across each stage of the school.

Please sign up for our admissions events on the Admissions page of our website or via the 'Event' menu in DCB WeChat (QR code on the back cover). A detailed programme and campus access information are shared with registered families a few days before each event.

# CONTACT US

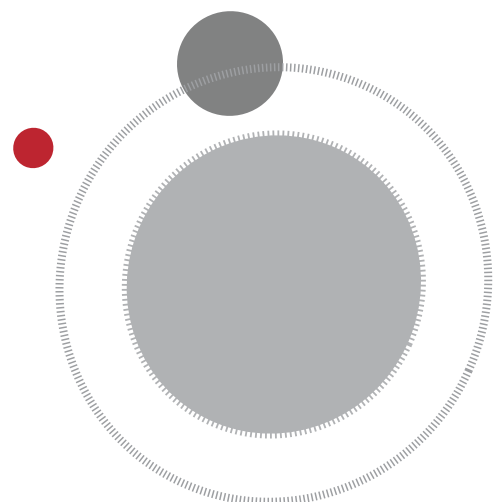
---

Website: [beijing.dulwich.org](http://beijing.dulwich.org)

Tel: +86 (10) 6454 9002

Email: [admissions.beijing@dulwich.org](mailto:admissions.beijing@dulwich.org)

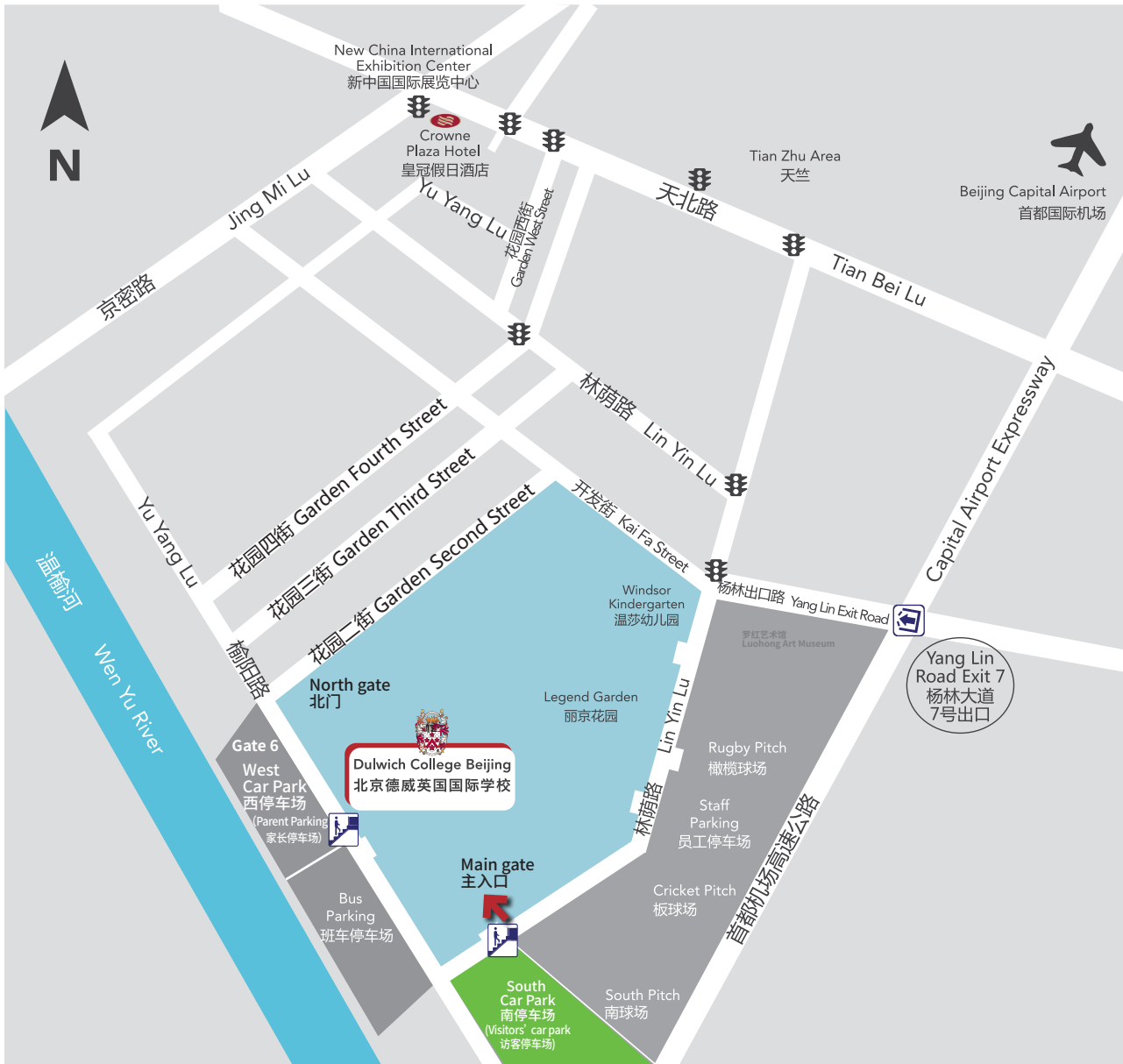
Address: 89, Capital Airport Road, Shunyi District, Beijing



# SCHOOL TOUR

Our weekly tours are thoughtfully tailored to suit your child's age and educational journey. Each tour provides an exclusive opportunity to explore our world-class facilities, experience our vibrant learning environment, see our students in action, and truly understand what makes our school community so special, and to gain deeper insight into the exceptional programmes we offer. Please scan the QR code below and choose your desired School to book a tour and discover firsthand what makes DCB a leader in education.

**Book a tour:**



## Contact us




Follow us on WeChat



Follow our website

 [Dulwich College Beijing](#) 🔍

 [Dulwich College Beijing](#) 🔍

 [DulwichCollegeBeijing](#) 🔍

 [北京德威英国国际学校](#) 🔍

 +86(10) 6454-9002

 [admissions.beijing@dulwich.org](mailto:admissions.beijing@dulwich.org)

 89 Capital Airport Road Shunyi District Beijing 101300 PRC  
中国北京市顺义区首都机场路89号丽京花园7区